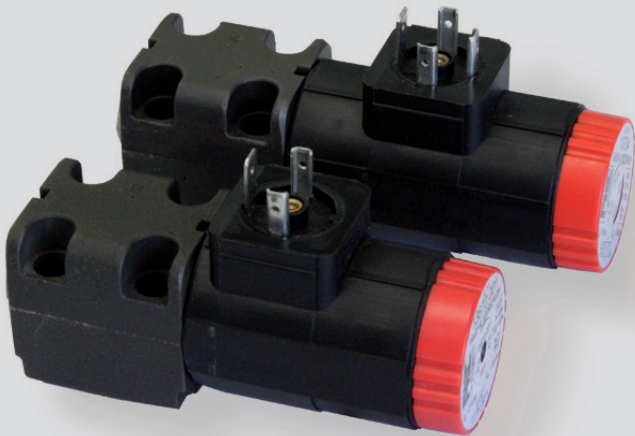


4/2, 4/3 Directional Control Valve, NG 4 ISO 4401 Technical Data Sheet



- Directly controlled piston valve
- Compact design
- Short switching time
- Low internal leakage
- Pressure sealed oli-immersed solenoids for direct or alternating current
- Easy service: solenoid can be changed without leakage while the valve is under system pressure
- Solenoids can be rotated 3 x 90°, allowing alternative connector positions
- Only one plug, even with 4/3 directional control valves
- Port connection pattern according to ISO 4401

Technical Data

General

Type of valve	piston valve
Operation	electric
Mounting	4 x M5 x 25 DIN912
Connection of ports	mounting plate
Mounting positions	mountable in any positions
Ambient temperature	-5 to +50 °C
Mass valve	0,68 kg with single acting solenoid 0,77 kg with double acting solenoid

Hydraulic

Operation pressure P,A,B	max. 315 bar
Operation pressure T	max. 150 bar
Hydraulic oil temperature	-10 to +70 °C
Viscosity range	10 to 300 mm ² /s
max. flow	30 l/min

Electric

Voltage (±10%)	24 V DC	230V, 50Hz AC
Switching time on*	17 ms	25 ms
Switching time off**	17 ms	25 ms
Power consumption P20	20 W	
Start up peak P20		64 VA
Duty factor	100%	100%
Protection system	IP65	IP65
DIN 40450		

* at 24V DC ± 5%

** at terminal voltage = -50V at free circuit

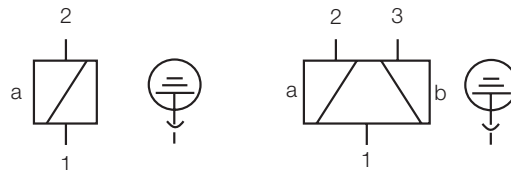
Options

- Alternativ voltages
- Alternativ symbols - data sheet: 14607-DSH
- Alternativ plugs
- Alternativ solenoid position
- Manual emergency operation even for 4/3 directional control valves

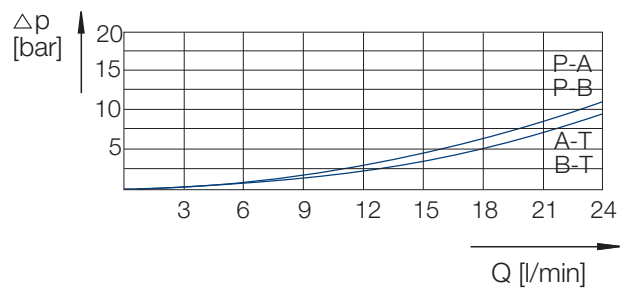
Symbol

1	
2	
3	
4	
5	
6	

Electrical Connection

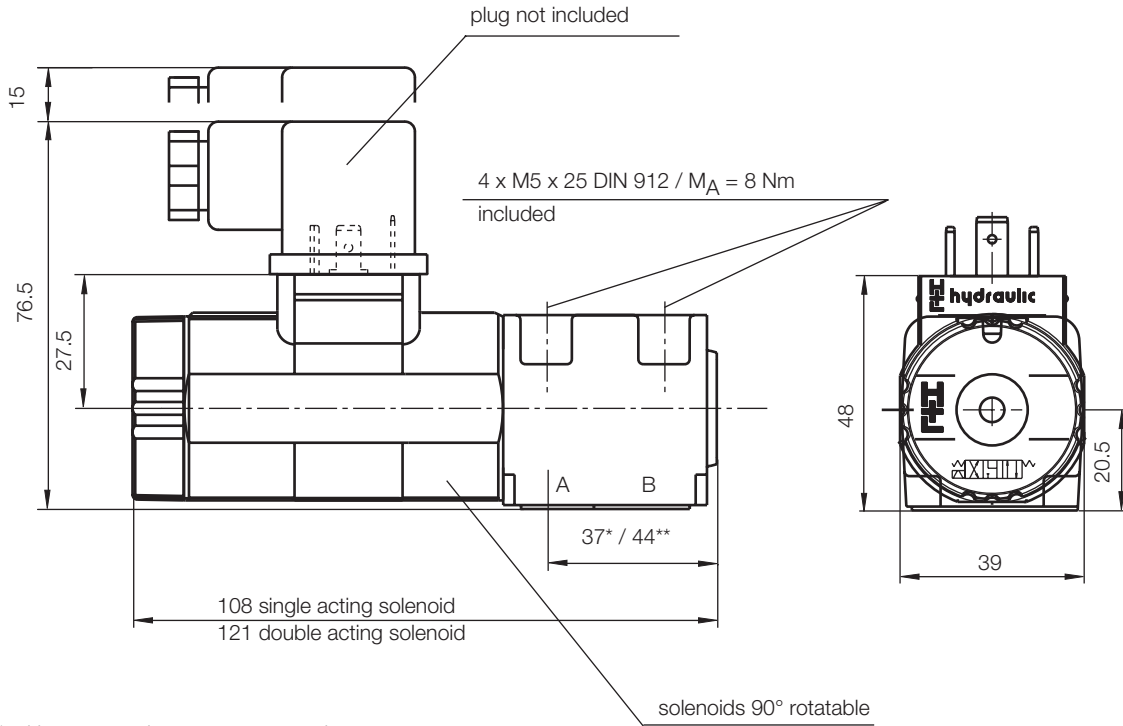


Characteristic Curve



hydraulic oil 35 mm²/s, 50°C

Dimensional Drawing

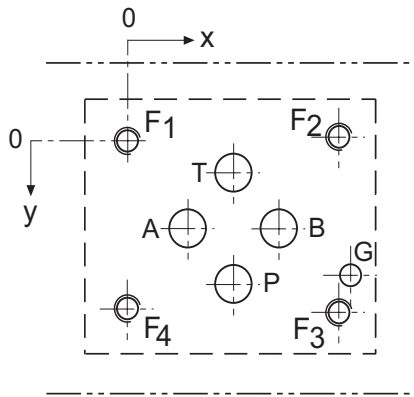


* without manual emergency operation

** with manual emergency operation

all dimensions in mm

Port Connection Pattern NG 4 ISO 4401



view: fastening side of mounting plate

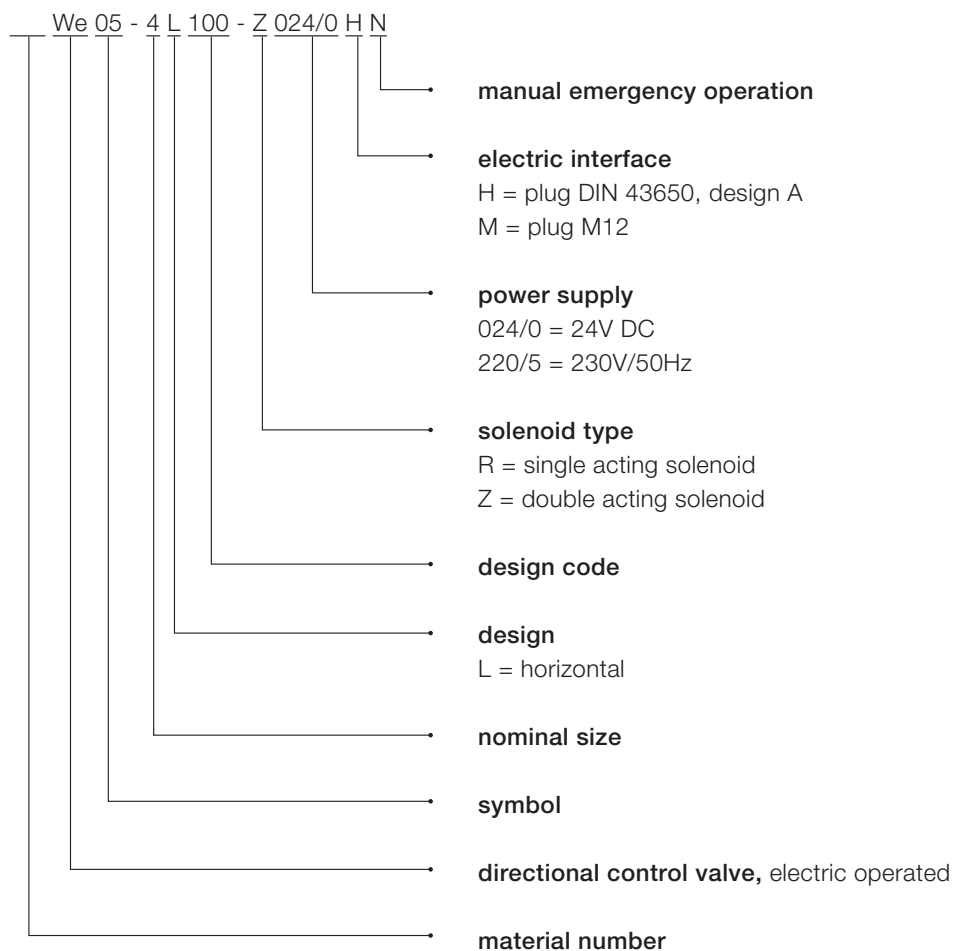
	P	A	T	B	F1	F2	F3	F4	G
Ø max [mm]	4.5	4.5	4.5	4.5	-	-	-	-	3.4
x [mm]	12	4.3	12	19.7	0	24	24	0	26.5
y [mm]	20.25	11.25	2.25	11.25	0	-0.75	23.25	22.5	17.75

F: M5, thread depth min. 1.5 x Ø

G: bore hole depth min. 1.5 x Ø

Various single and multiple mounting plates are available.

Type Code



This is a translated document. Original language: german.
Legally binding language version of document: german.

Voith Turbo H + L Hydraulic GmbH & Co. KG
Schuckertstraße 15
71277 Rutesheim, Germany
Tel. +49 7152 992 3
Fax +49 7152 992 400
sales-rut@voith.com
www.voith.com/hydraulic-systems



VOITH
Engineered Reliability